



[Order Brochures](#) | [Upcoming & Recorded Webinars](#) | [Our Portfolio](#) | [Email Us](#)

Dear Colleague,

Lot's of happenings at [Emerging Destinations](#) and with all of our clients this month!

We're getting ready to welcome a new member to the Emerging Destinations team. Jenna Farber, based in Canada, starts with us in March. And even though she's new to our side of the business, Jenna certainly isn't new to the travel industry. She has been doing projects for her family's travel agency for years, as well as interning at a community based tourism project in Mexico. We're as pleased as can be to welcome her aboard. Look out for Jenna's contact info in next month's newsletter.

Last week I visited quite a few agencies with Kieran Day, the new CEO of [Cheli & Peacock](#), as well as a long-time director of [The Elewana Collection](#). Let me know if you have time for an update on the many exciting things that are happening at C&P in East Africa.

Kieran and I also visited our partners at the San Diego Zoo — they're doing research at Loisaba — for a look at their Institute for Conservation Research. I was blown away by the [Frozen Zoo](#). And our private tour of the Safari Park was pretty cool, too. One of the many reasons I love my job!

Read on for more news and features on our African and Asian partners.

Jane + Jessie



News At A Glance

Jungle Sutra

- Did you know that we offer **Guaranteed Departures** with minimum 2 guests for tours in search of Bengal tigers, red pandas, sloth bears, snow leopards and more. [Details](#)

EcoTraining Guides and Guardians

- We are expanding accommodation offerings in Kenya, so look out for new custom family and small group options.

Adventure Consults

- All travelers more than one year old are now required to present a valid yellow fever vaccination certificate when visiting Uganda.

The Elewana Collection

- Our new 5-star [Elewana Lodo Springs](#) at Loisaba Conservancy opens in June. Eight spacious tented rooms with sweeping views, Elewana guest ambassador and dedicated safari vehicle with guide.
- Elewana Elephant Pepper Camp is no longer offering guests horse riding.
- "Stay for 3 Nights and Pay for 2" has been extended to all of our Kenya and Tanzania properties. Travel period to 31 May 2019.
- Many Elewana Collection properties have been nominated for Travel + Leisure World's Best Awards 2019. We greatly appreciate your [Vote](#).
- Our live webcam at Elewana Tarangire Treetops safari camp captures the waterhole in real time. Check it out [here](#).
- The Manor at Ngorongoro is no longer offering mountain biking as an activity.
- Elewana Loisaba Star Beds, Elewana Elephant Pepper Camp and Elewana Kilindi Zanzibar will be closed from the 1st April to the 31st May 2019.
- Renovations and improvements to Elewana Sand River are now complete.

Crafted by Creative

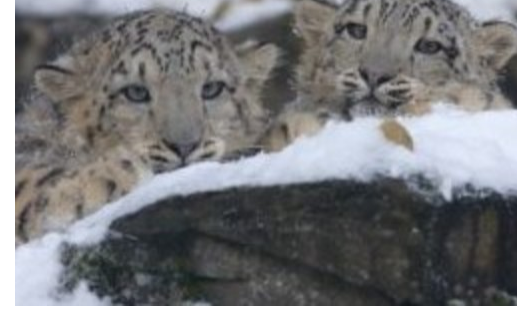
- There's still time to book our expert-led, carefully crafted and interest-based itineraries for 2019 — including "Multi Hues of India" in March, "Perahera, The Festival of Tooth" in August and "The Emperor's Table" in September. [More](#)

Cheli & Peacock

- From hiking the Empakai Crater to exploring north of Kenya on foot, our 2019 Signature Itineraries offer inimitable East African experiences and the safari of a lifetime. [More](#)
- Our 2019 sample itineraries are available via WebConnect, WETU sample itinerary catalogues and PDFs. Please [contact us](#) for rates.

East Africa

- Tanzania's new E-Visa Service helps streamline the visitor experience. Visa requirements and charges have not changed.



Snow Leopard – The Grey Ghost of the Himalayas

The diversity of the Indian subcontinent is reflected in its intriguing mix of wildlife and habitats that segue from tropical evergreen forests and coastal swamps to the arid mountains of the extreme north. One fascinating species that calls this area home is

the [MORE](#)



Jungle Sutra's Fixed Departure Indian Wildlife Safaris

Ready for the wild side of India? [Jungle Sutra](#) is offering the following guaranteed departure safaris (with a minimum of two guests) for the 2019/20 season. All tours have a maximum size of 12 guests, with the exception of Red Panda

which is limited to 8 guests. [MORE](#)

Loisaba Researchers Spot Rare Black Panthers

The San Diego Zoo Global program and Loisaba Conservancy recently reported that images of very rare black leopards have been captured on camera traps in the conservancy and neighboring properties. [MORE](#)



9 Incredible Facts About Rhinos

[EcoTraining Guides & Guardians](#) in South Africa offers some interesting facts about the second largest African land animal — the noble rhino:

1. In Ancient Greek, the name rhinoceros means "nose horn."
2. There are five different rhino species including

the black and white Rhino of Africa, and the [MORE](#)

Read All About It! Read All About It!



Citizen Femme, a web magazine dedicated to luxury women's travel, offers a story on [winter escapes](#) (both hot and cold) that includes [Elewana's Kilindi Zanzibar](#) resort in East Africa. [MORE](#)



Intrepid Explorer magazine in South Africa brings us a story on women who went [birding](#) in Kruger National Park with [EcoTraining Guides & Guardians](#). [MORE](#)



Creative Travel in India featured an item in a recent newsletter about how the ancient land of Sikkim in the Himalayas (between Bhutan and Nepal) recently opened its [first airport](#). [MORE](#)



Want to hear from us more? Or Never? [Click Here!](#)

Contact Jane Behrend at +1 (404) 993-6116 or Jessie Bligh at +1 (770) 377-8892
info@emergingdestinations.com
www.emergingdestinations.com

Share this email:



[Manage](#) your preferences | [Opt out](#) using TrueRemove™
Got this as a forward? [Sign up](#) to receive our future emails.
View this email [online](#).

One Glenlake Parkway Suite 650
Atlanta, GA | 30328 US

This email was sent to .
To continue receiving our emails, add us to your address book.

