



News on Adventure Consults, Cheli & Peacock, Creative Travel, EcoTraining, Elewana Collection, Jungle Sutra, , SkySafari

[Order Brochures](#) | [Upcoming & Recorded Webinars](#) | [Our Portfolio](#) | [Email Us](#)

Dear Colleague,

We are thrilled to announce that [Shanga](#), located at the Elewana Arusha Coffee Lodge and run by our social enterprise NGO, The Land & Life Foundation, was one of three finalists for the Tourism for Tomorrow Award. If you haven't visited Shanga at Traders Walk, which is located on our property, you are missing out! In addition to providing jobs for disabled Tanzanians and changing their lives, it is some of the best shopping in Tanzania! More info can be found [here](#).

If you are headed to Indaba or We are Africa -- look for [EcoTraining](#), [Elewana](#) and [Cheli & Peacock Safaris](#). If you need an appointment, just [let us know](#). The team from [Jungle Sutra](#) and [Creative Travel](#) are going to be in the Tri-State area in June. [Contact us](#) if you would like to see them.

Below is news and information that we hope you find helpful. And take a look at the video on how they make their daily bread at EcoTraining!

Best regards,

Jane + Jessie + Jenna + Ana



ORDER BROCHURES

News At A Glance

Emerging Destinations

New! [Join our Travel Trade Group Facebook Page](#) for insider access to all of our client's trade news, events, promotions, webinars, and more! Feel free to use this forum to ask questions, request information or share insights! All feedback is welcome.

Jungle Sutra

- Did you know that we offer **Guaranteed Departures** with minimum 2 guests for tours in search of Bengal tigers, red pandas, sloth bears, snow leopards and more? [Details](#)

EcoTraining Guides and Guardians

- We will be at Africa's Indaba. Please schedule an appointment to meet with Corne Schalkwyk [here](#).
- Attending We Are Africa this year? Please request an appointment with our Corne Schalkwyk in your appointment scheduler.
- We are expanding accommodation offerings in Kenya, so look out for new custom family and small group options.
- Please complete this [short survey](#) to help us improve our relationship with you. In exchange, you will be entered to win a US\$714 discount towards any of our courses!

Adventure Consults

- All travelers more than one year old are now required to present a valid yellow fever vaccination certificate when visiting Uganda.

The Elewana Collection

- Shanga — Elewana Collection's social enterprise program at [Arusha Coffee Lodge](#) — was named one of three finalists for a 2019 Tourism for Tomorrow Award in the "Investing in People" category. [MORE](#)
- Elewana Elsa's Kopje Celebrates our 20th Anniversary on 3rd to 6th July 2019. Access Virginia McKenna from *Born Free* to Join Guests for Festivities. [More info](#).
- Our new 5-star [Elewana Lodo Springs](#) at Loisaba Conservancy opens in June. Eight spacious tented rooms with sweeping views, Elewana guest ambassador and dedicated safari vehicle with guide.
- "Stay for 3 Nights and Pay for 2" has been extended to all of our Kenya and Tanzania properties. Travel period to 31 May 2019.
- Our live webcam at Elewana Tarangire Treetops safari camp captures the waterhole in real time. Check it out [here](#).
- The Manor at Ngorongoro is no longer offering mountain biking as an activity.
- Elewana Elephant Pepper Camp is no longer offering guests horse riding.
- Elewana Loisaba Star Beds, Elewana Elephant Pepper Camp and Elewana Kilindi Zanzibar will be closed from the 1st April to the 31st May 2019.
- Renovations and improvements to Elewana Sand River are now complete.

Crafted by Creative

- There's still time to book our expert-led, carefully crafted and interest-based itineraries for 2019 — including "Perahera" in August, "The Zen Masters" in September and "Tales of Indian Brew" and "Home Grown" in October. [More](#)
- Check out some of the amazing small group itineraries on offer from August of 2019: [Perahera](#), [The Festival of Tooth](#), [The Emperor's Table](#) and [Mind, Body and Soul of India](#)

Cheli & Peacock

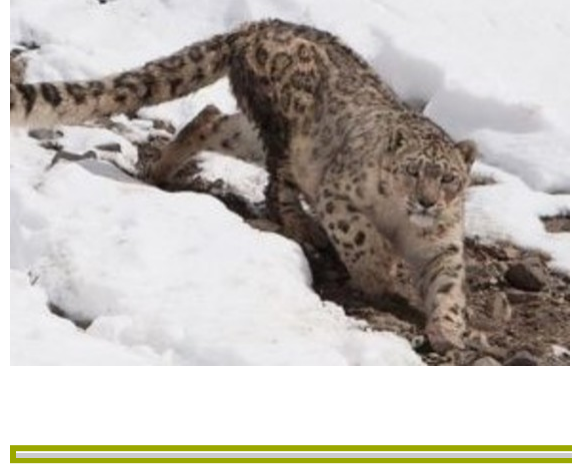
- From conquering Mount Kilimanjaro to exploring north of Kenya on foot, our 2019 Signature Itineraries offer inimitable East African experiences and the safari of a lifetime. [More](#)
- Our 2019 sample itineraries are available via WebConnect, WETU sample itinerary catalogues and PDFs. [Contact us](#) for rates.

East Africa

- Tanzania's new E-Visa Service helps streamline the visitor experience. Visa requirements and charges have not changed.

Kenya Airways

- A new codeshare agreement with Delta means seamless travel between Nairobi and 111 US and 4 Canadian cities. [More](#)

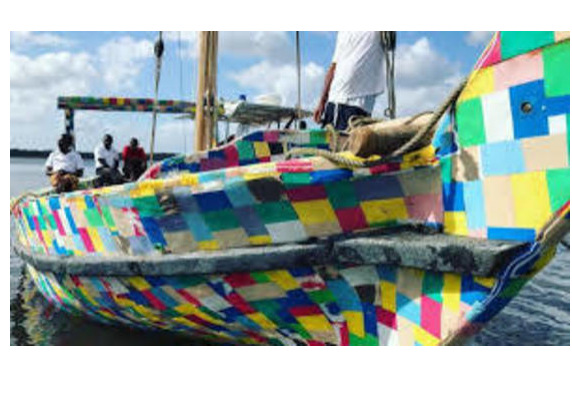


Himalayan Cool Cats — Snow Leopard Safari

[Jungle Sutra](#) is offering a rare chance to journey into the Himalayas in search of the elusive snow leopard and other exceptional wildlife. The 11-day safari is scheduled for Nov. 8-18, 2019 in the Ladakh region of northern India. [MORE](#)

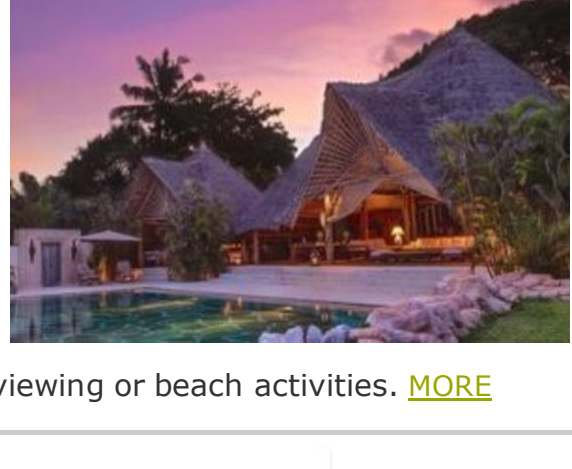
Bush Recipes : Pot Brood in the Bush

Don't let the idea of cooking in the African bush put you down. [EcoTraining](#) has operated in remote wilderness camps for 25 years now and picked up some interesting hacks when it comes to cooking. Watch this video as one of our cooks, T.K, gives a step-by-step guide on how to prepare Pot Brood in the bush.



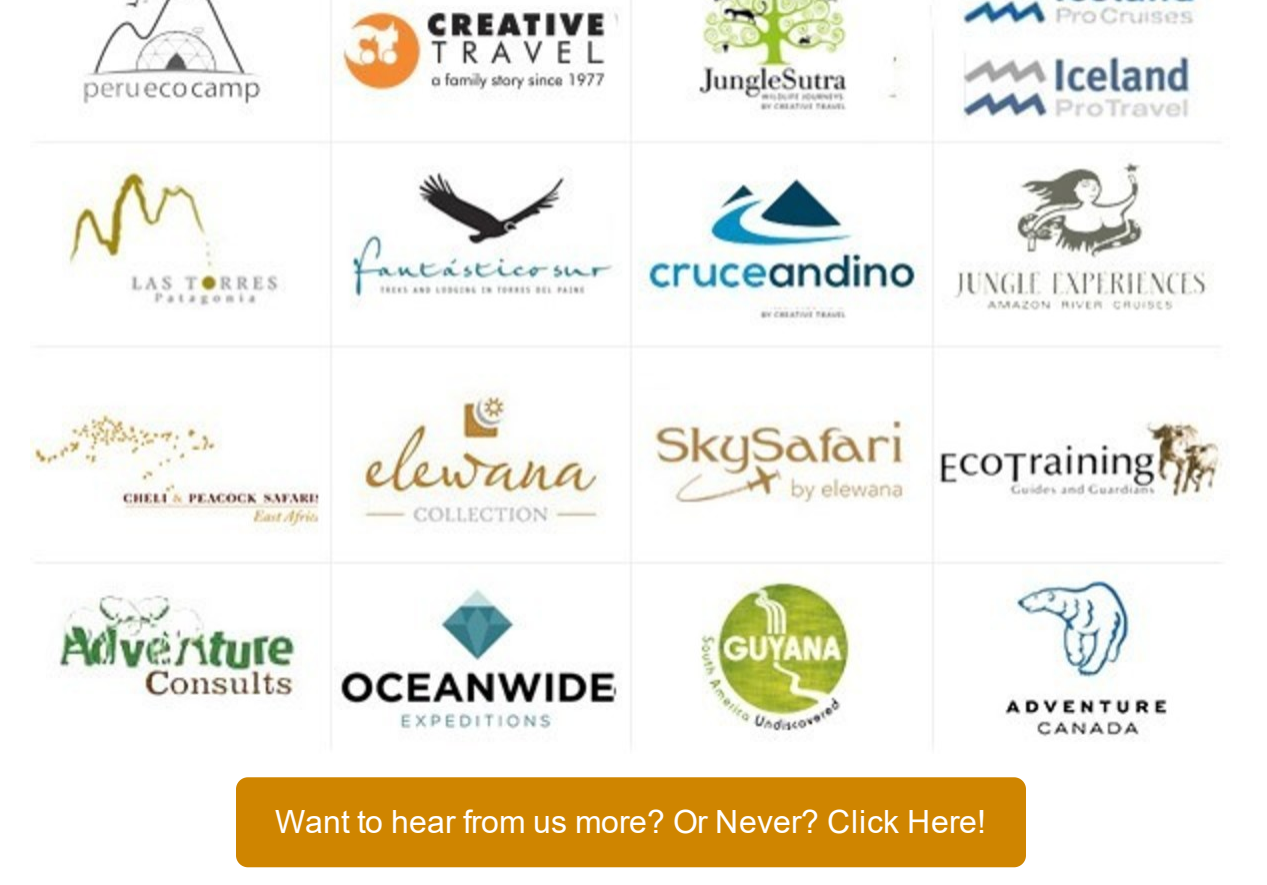
The Inspirational Journey of Flipflop

[The Elewana Collection](#) is proud to announce that on the 7th of February 2019 — after 18 days at sea and 310 miles on the water — the Clean Seas-Flipflop Expedition arrived at the island of [MORE](#)



Kenya Private Villa Safari

[Cheli & Peacock](#) offers the ultimate safari experience — a chance to stay at two exclusive, privately owned and managed luxury villas at Masai Mara and Diani Beach. These villa safaris are available families, groups or even couples who rave a romantic hideaway after a long day of game viewing or beach activities. [MORE](#)



Want to hear from us more? Or Never? Click Here!

Contact Us:
Jessie Bligh at +1 (770) 377-8892 | jessie@emergingdestinations.com
Jenna Farber at +1 (306) 202-8471 | jenna@emergingdestinations.com
Ana Kammerer at +1 (404) 496-5099 | ana@emergingdestinations.com
Jane Behrend at +1 (404) 993-6116 | jane@emergingdestinations.com
info@emergingdestinations.com
www.emergingdestinations.com

Share this email:



[Manage](#) your preferences | [Opt out](#) using TrueRemove™
Got this as a forward? [Sign up](#) to receive our future emails.
View this email [online](#).

One Glenlake Parkway Suite 650
Atlanta, GA | 30328 US

This email was sent to .
To continue receiving our emails, add us to your address book.

