



News on Adventure Consults, Cheli & Peacock, Creative Travel, EcoTraining, Elewana Collection, Jungle Sutra, , SkySafari

[Order Brochures](#) | [Upcoming & Recorded Webinars](#) | [Our Portfolio](#) | [Email Us](#)

Dear Colleague,

So many of you journeyed to the African continent over this past month and we really enjoyed following you on Facebook. And a special thanks to those of you who visited with [Cheli & Peacock](#), [Elewana](#) and [EcoTraining](#) at recent trade shows.

Hopefully, we can connect with some of you on our upcoming travels.

In June, Ana from our team is visiting New York, Connecticut and Boston, while Jessie will be attending the Tour & Travel Exchange and then meeting up with Jenna in Seattle for sales calls. Lucky me will be spending a week on sales calls in Montana — and then vacationing outside of Yellowstone!

Best,

Best regards,

Jane + Jessie + Jenna + Ana



ORDER BROCHURES

News At A Glance

Emerging Destinations

New! [Join our Travel Trade Facebook Page](#) for insider access to our client's trade news, events, promotions, webinars, and more! Feel free to use this forum to ask questions, request information or share insights! All feedback is welcome.

Adventure Consults

- New! Direct flights from Kenya's Masai Mara to Entebbe, with onward connections to Uganda's national parks starting June 1.

EcoTraining Guides and Guardians

- 10% discount on 1st 10 bookings of [7-day EcoQuest course](#) at Karongwe Camp, 31 May to 06 June 2019.
- We are expanding accommodation offerings in Kenya, so look out for new custom family and small group options.

Adventure Consults

- All travelers more than one year old are now required to present a valid yellow fever vaccination certificate when visiting Uganda.

The Elewana Collection

- Check out our [New Fact Sheet](#).
- Guided walking safaris suspended in Lewa Conservancy at Kifaru House and Lewa Safari Camp.
- As of 1st June 2019, the sale and use of polythene bags for commercial or household packaging will be banned throughout Tanzania. Please ensure that your guests are advised.
- The Rejuvenated Elewana Sand River Masai Mara includes new tent decking and rain showers as well as the new infinity pool and landscaping. [Images in Dropbox](#).
- Shanga — Elewana Collection's social enterprise program at [Arusha Coffee Lodge](#) — was one of three finalists for a 2019 Tourism for Tomorrow Award in the "Investing in People" category. [MORE](#)
- Elewana Elsa's Kopje Celebrates our [20th Anniversary](#) on 3rd to 6th July 2019. Actress Virginia McKenna from *Born Free* to join guests for festivities.
- Our new 5-star [Elewana Lodo Springs](#) at Loisaba Conservancy opens in June. Eight spacious tented rooms with sweeping views, Elewana guest ambassador and dedicated safari vehicle with guide.
- "Stay for 3 Nights and Pay for 2" has been extended to all of our Kenya and Tanzania properties. Travel period to 31 May 2019.
- Our live webcam at Elewana Tarangire Treetops safari camp captures the waterhole in real time. Check it out [here](#).
- The Manor at Ngorongoro is no longer offering mountain biking as an activity and Elephant Pepper Camp is no longer offering horse riding.
- Elewana Loisaba Star Beds, Elewana Elephant Pepper Camp and Elewana Kilindi Zanzibar will be closed to 31st May 2019.

Crafted by Creative

- There's still time to book our expert-led, carefully crafted and interest-based [2019 itineraries](#) — including "Perahera" in August, "The Zen Masters" in September and "Tales of Indian Brew" and "Home Grown" in October.
- Check out some of the amazing small group itineraries on offer from August of 2019: [Perahera](#), [The Festival of Tooth](#), [The Emperor's Table](#) and [Mind, Body and Soul of India](#)

Jungle Sutra

- Did you know that we offer [Guaranteed Departures](#) with minimum 2 guests for tours in search of Bengal tigers, red pandas, sloth bears, snow leopards and more?

Cheli & Peacock

- As of 1st June 2019, the sale and use of polythene bags for commercial or household packaging will be banned throughout Tanzania. Please ensure that your guests are advised.
- From conquering Mount Kilimanjaro to exploring north of Kenya on foot, our 2019 Signature Itineraries offer inimitable East African experiences and the safari of a lifetime. [More](#)
- Our 2019 sample itineraries are available via WebConnect, WETU sample itinerary catalogues and PDFs. [Contact us](#) for rates.

East Africa

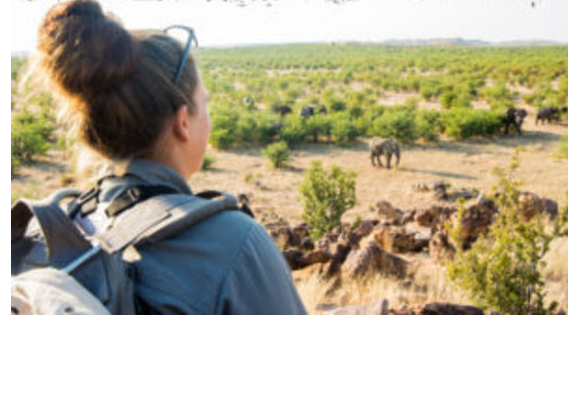
- Tanzania's new E-Visa Service helps streamline the visitor experience. Visa requirements and charges have not changed.

Kenya Airways

- A new [codeshare agreement](#) with Delta means seamless travel between Nairobi and 111 US and 4 Canadian cities.

28 Days in the African Bush with EcoTraining

Explore the wilderness of the majestic Makuleke Concession in the famed Kruger National Park or Mashatu in the Northern Tuli Reserve in Botswana on foot, on a [28-day Trails Guide Course](#) with EcoTraining Guides & Guardians. [MORE](#)

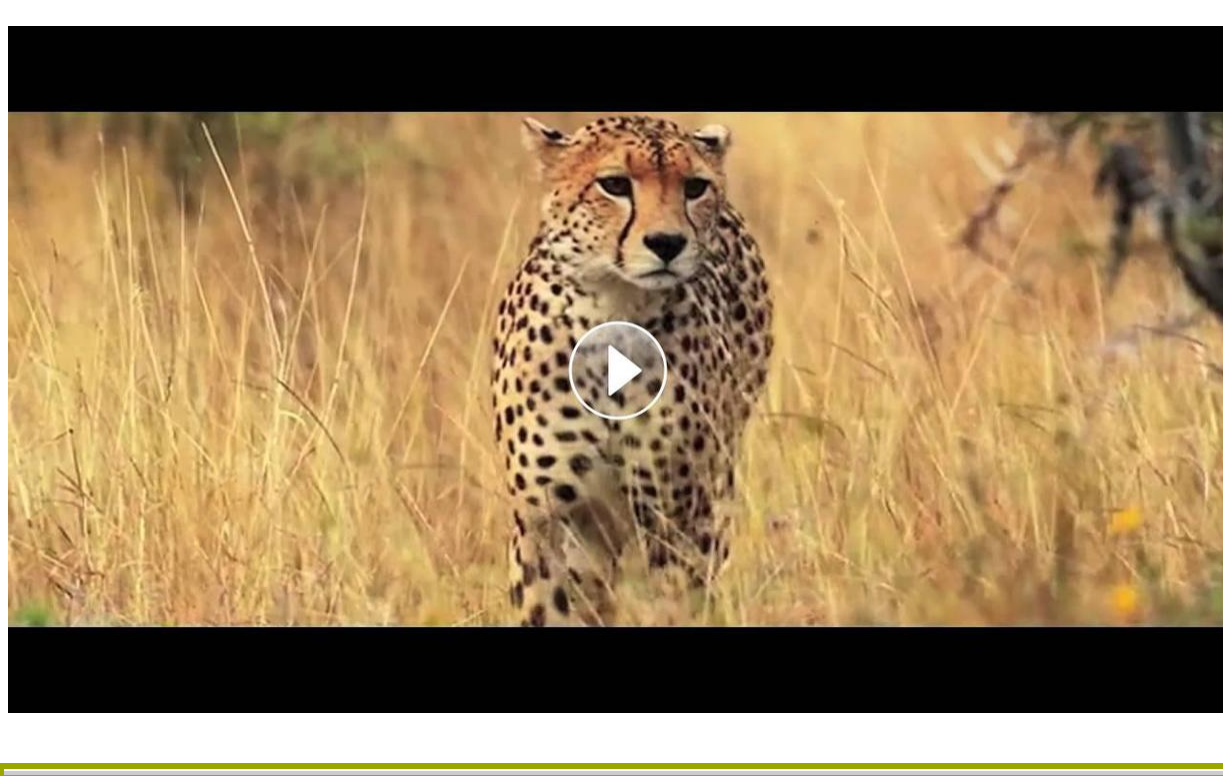


India Launches Mumbai-Goa Cruise

India's first domestic cruise liner is now plying the route between Mumbai to Goa with bookings available through [Creative Travel](#). Built in Japan, the luxurious seven-deck, 430-foot Angriya is fully equipped and staffed by an experienced team of marine and hospitality personnel. [MORE](#)

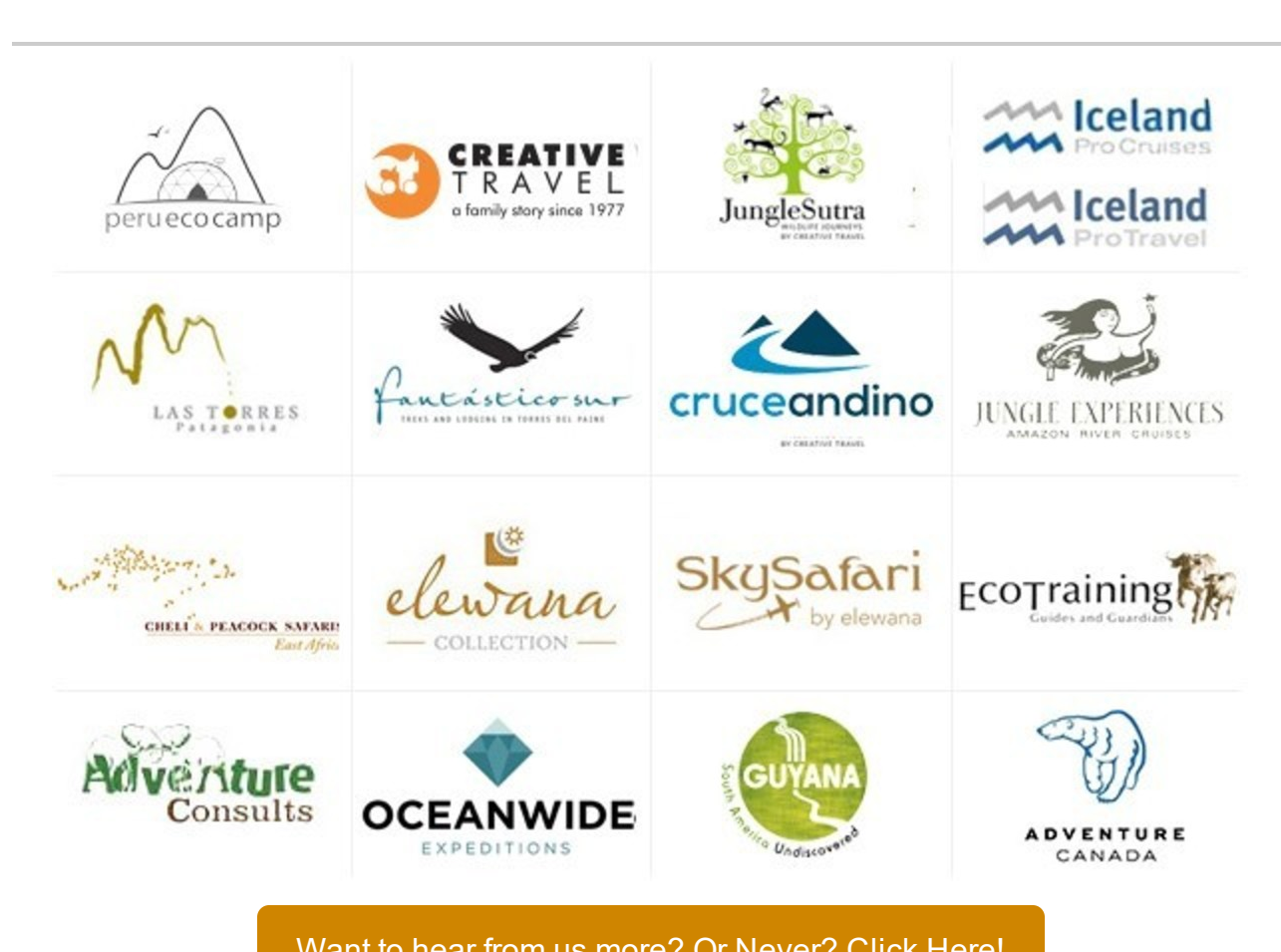
Diversity of Kenya

A stunning visual journey through Kenya's many different ecosystems allowing a glimpse into a true [Cheli & Peacock](#) safari!



In Search of the Bengal Tiger

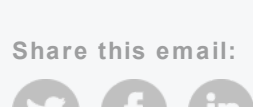
Jungle Sutra is offering a six-day wildlife safari this October especially designed for a sighting of the elusive [Bengal tiger in India](#). The journey revolves around the legendary Ranthambore Tiger Reserve, world renowned for its big striped cats. India is home to about 10% of the world's wildlife species, [MORE](#)



Want to hear from us more? Or Never? Click Here!

Contact Us:
Jessie Bligh at +1 (770) 377-8892 | jessie@emergingdestinations.com
Jenna Farber at +1 (306) 202-8471 | jenna@emergingdestinations.com
Ana Kammerer at +1 (404) 496-5099 | ana@emergingdestinations.com
Jane Behrer at +1 (404) 993-6116 | jane@emergingdestinations.com
info@emergingdestinations.com
www.emergingdestinations.com

Share this email:



Manage your preferences | [Opt out](#) using TrueRemove™
Got this as a forward? [Sign up](#) to receive our future emails.
View this email [online](#).

One Glenlake Parkway Suite 650
Atlanta, GA | 30328 US

This email was sent to .
To continue receiving our emails, add us to your address book.

